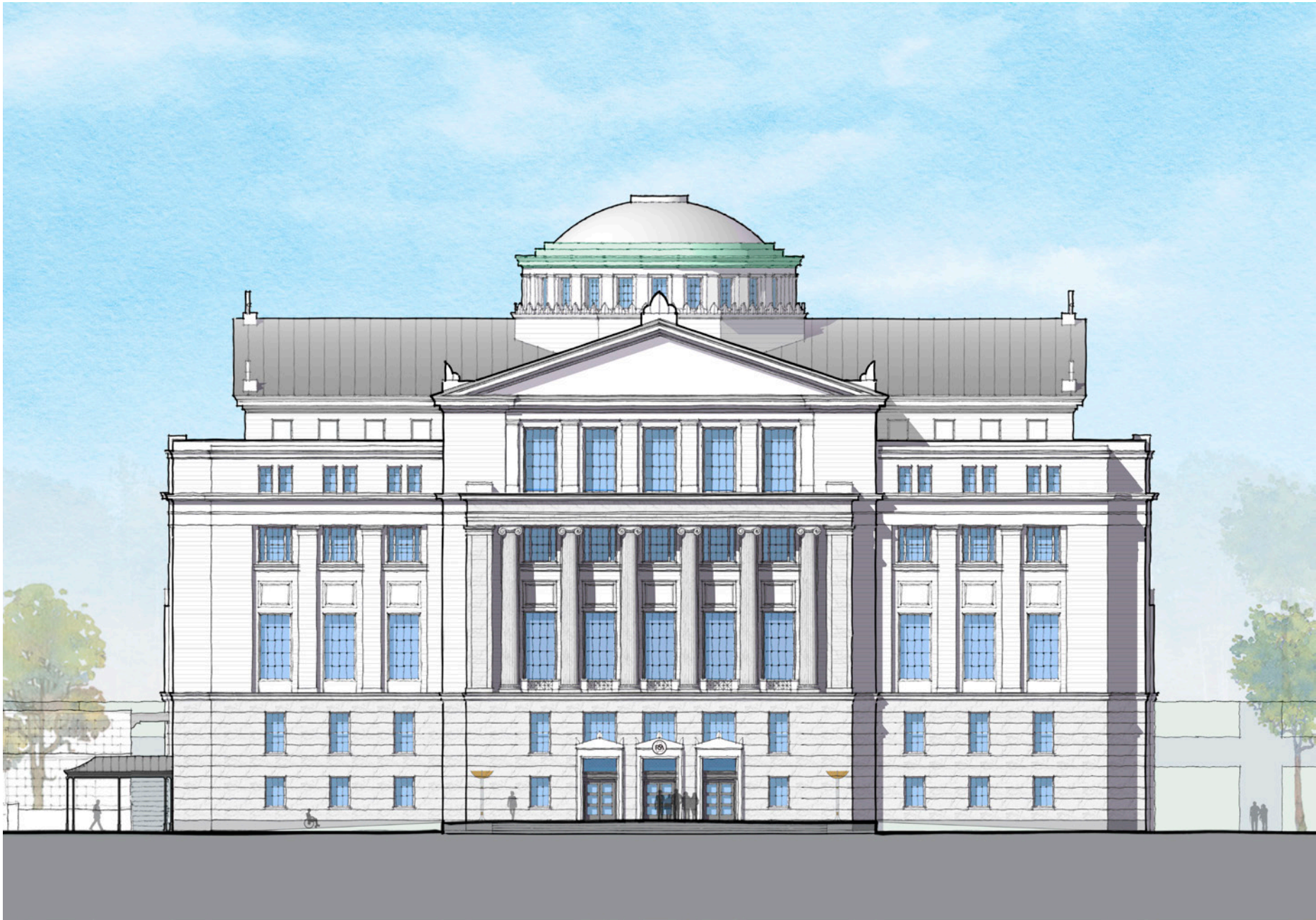




**DESIGN UPDATE**

01 MAY 2024

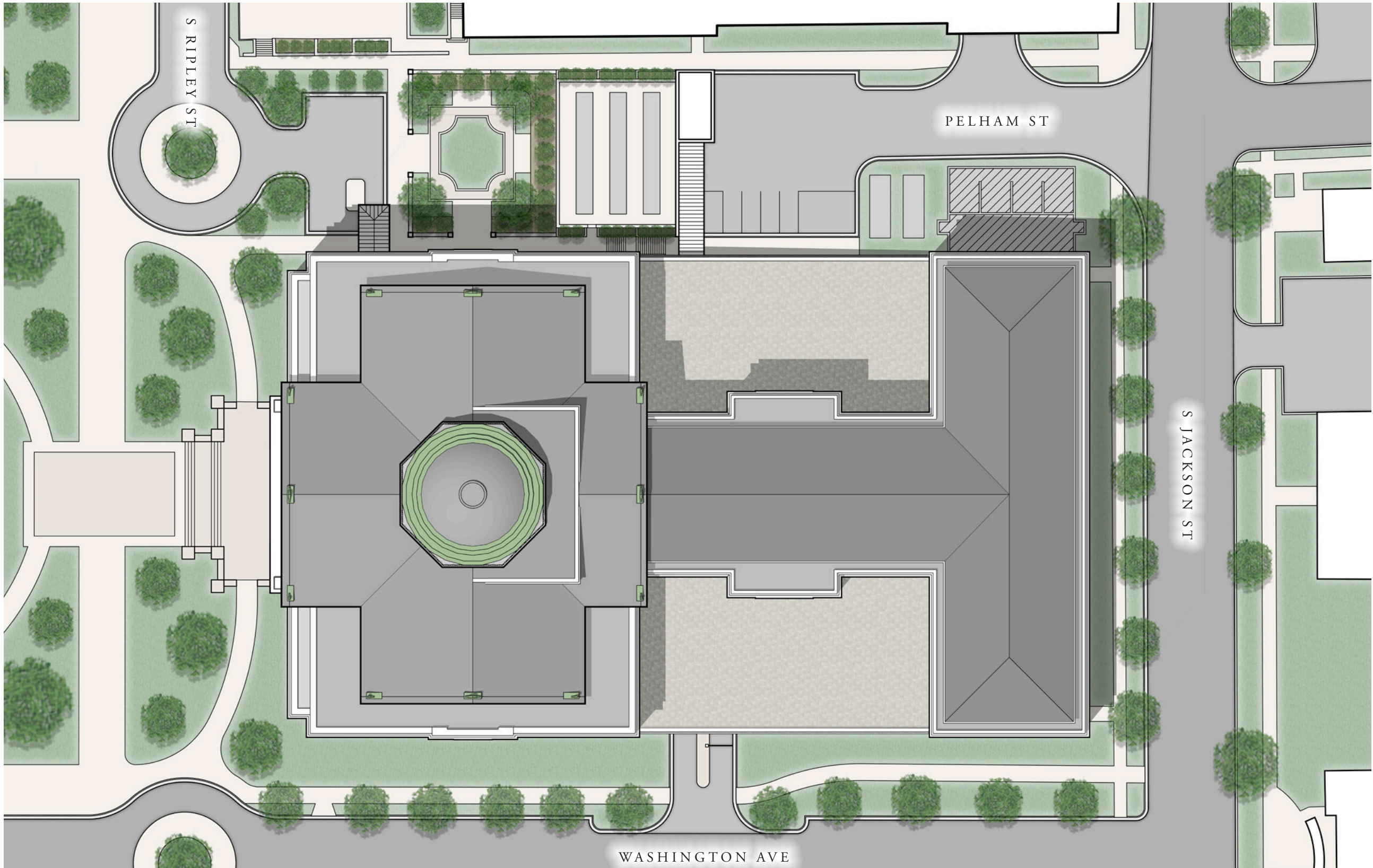


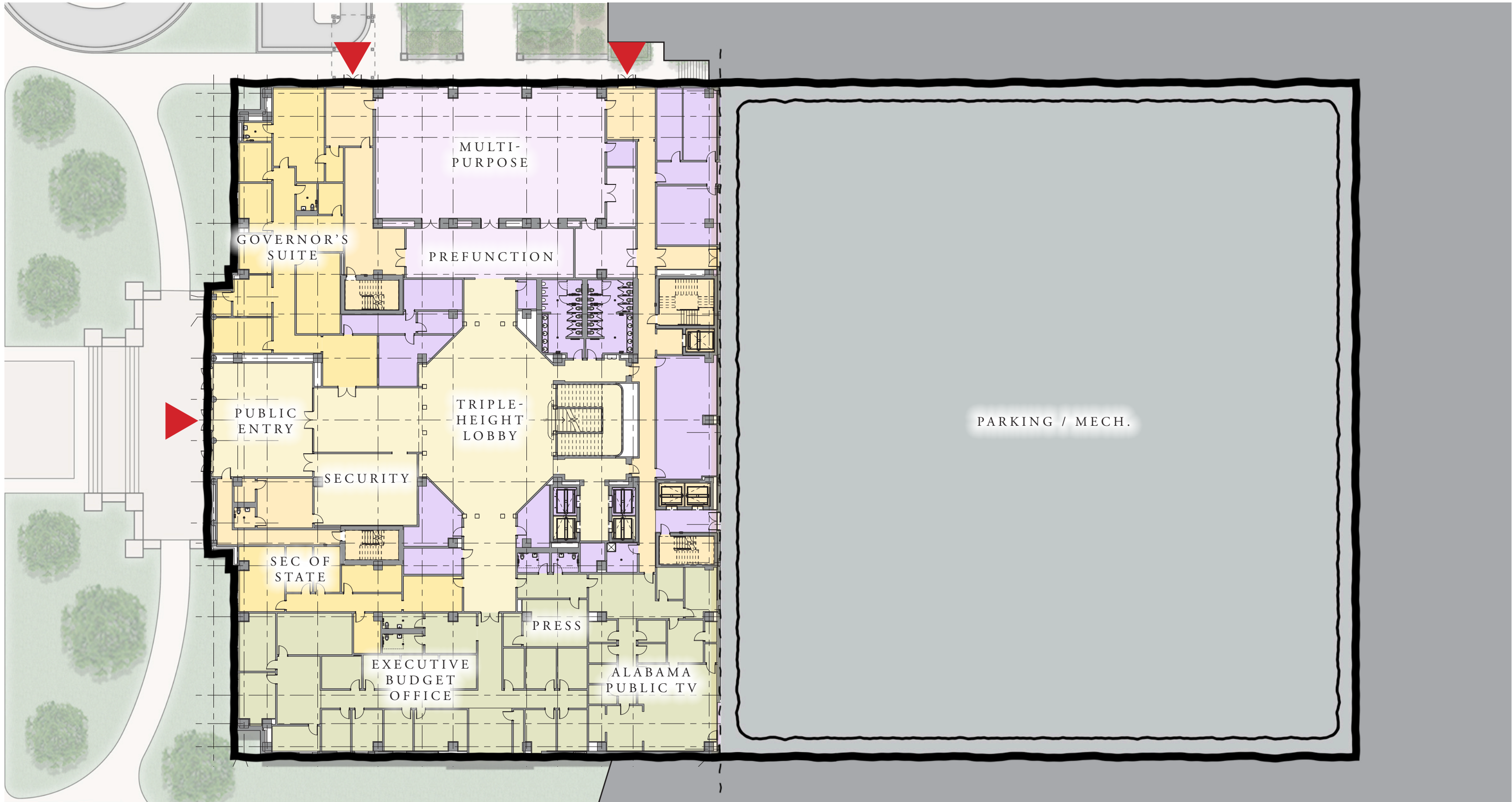
01 MAY 2024

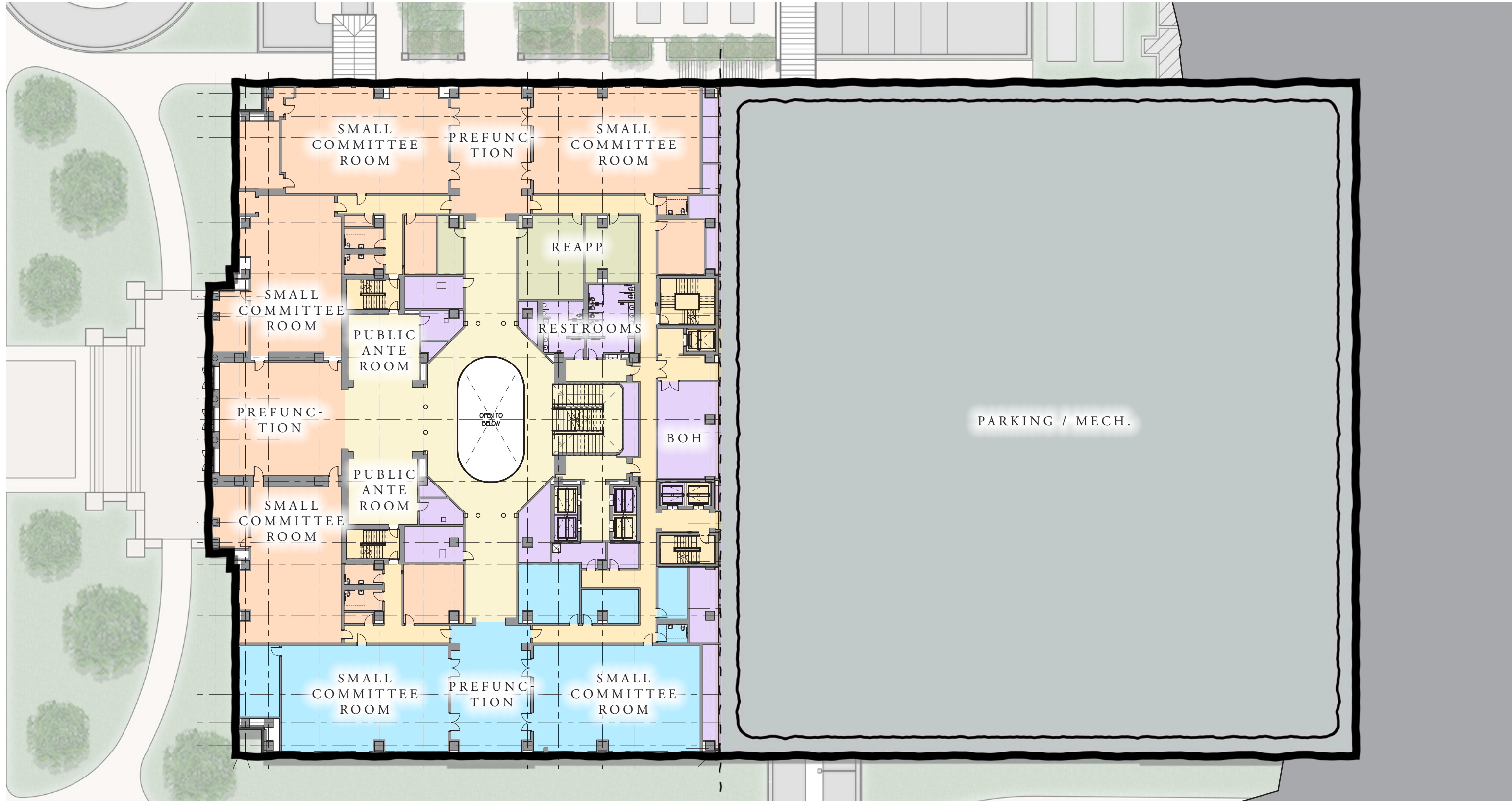
WEST ELEVATION

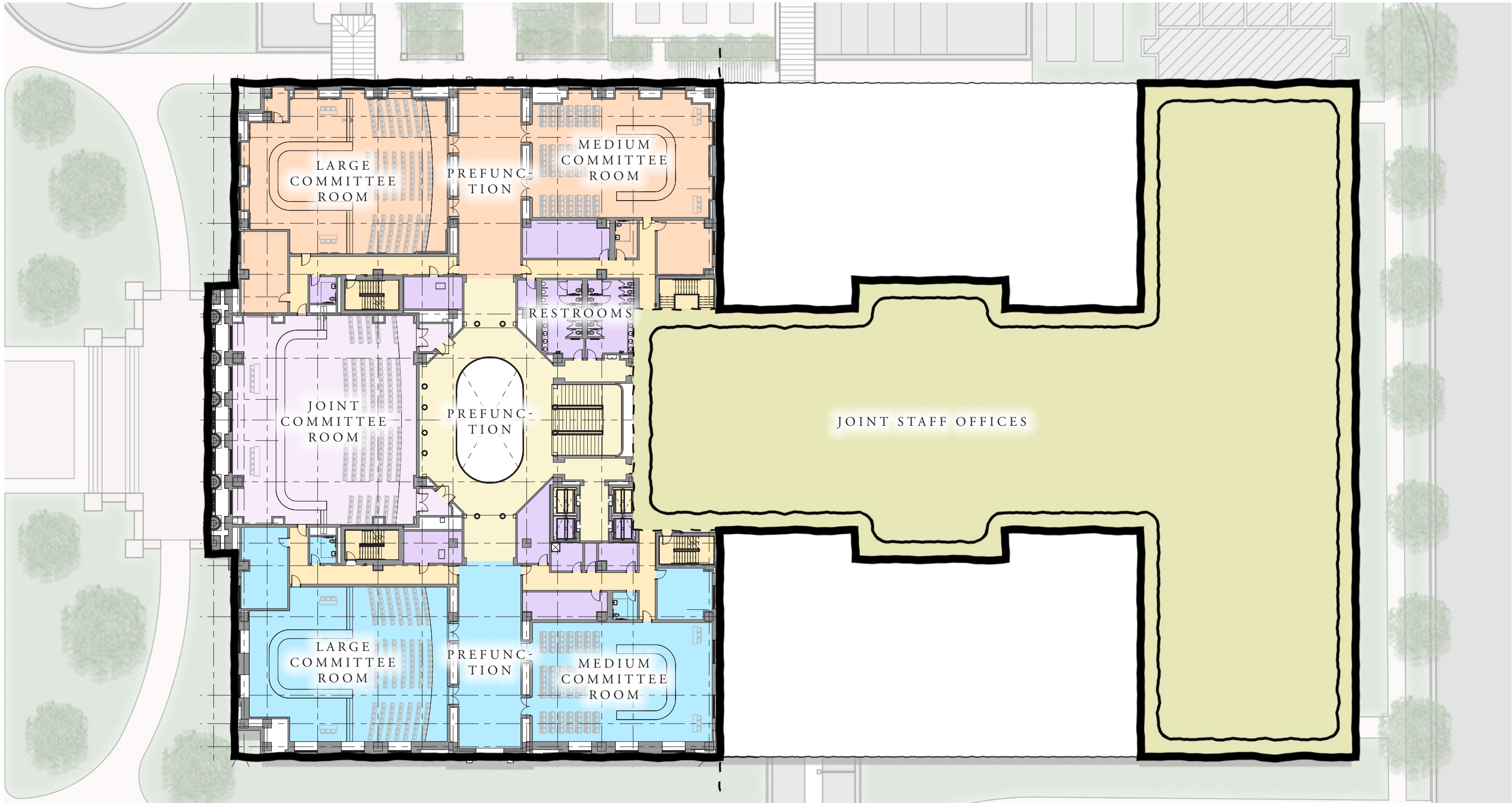
ALABAMA STATE HOUSE • MONTGOMERY, AL  
GOODWYN MILLS CAWOOD | ROBERT A.M. STERN ARCHITECTS

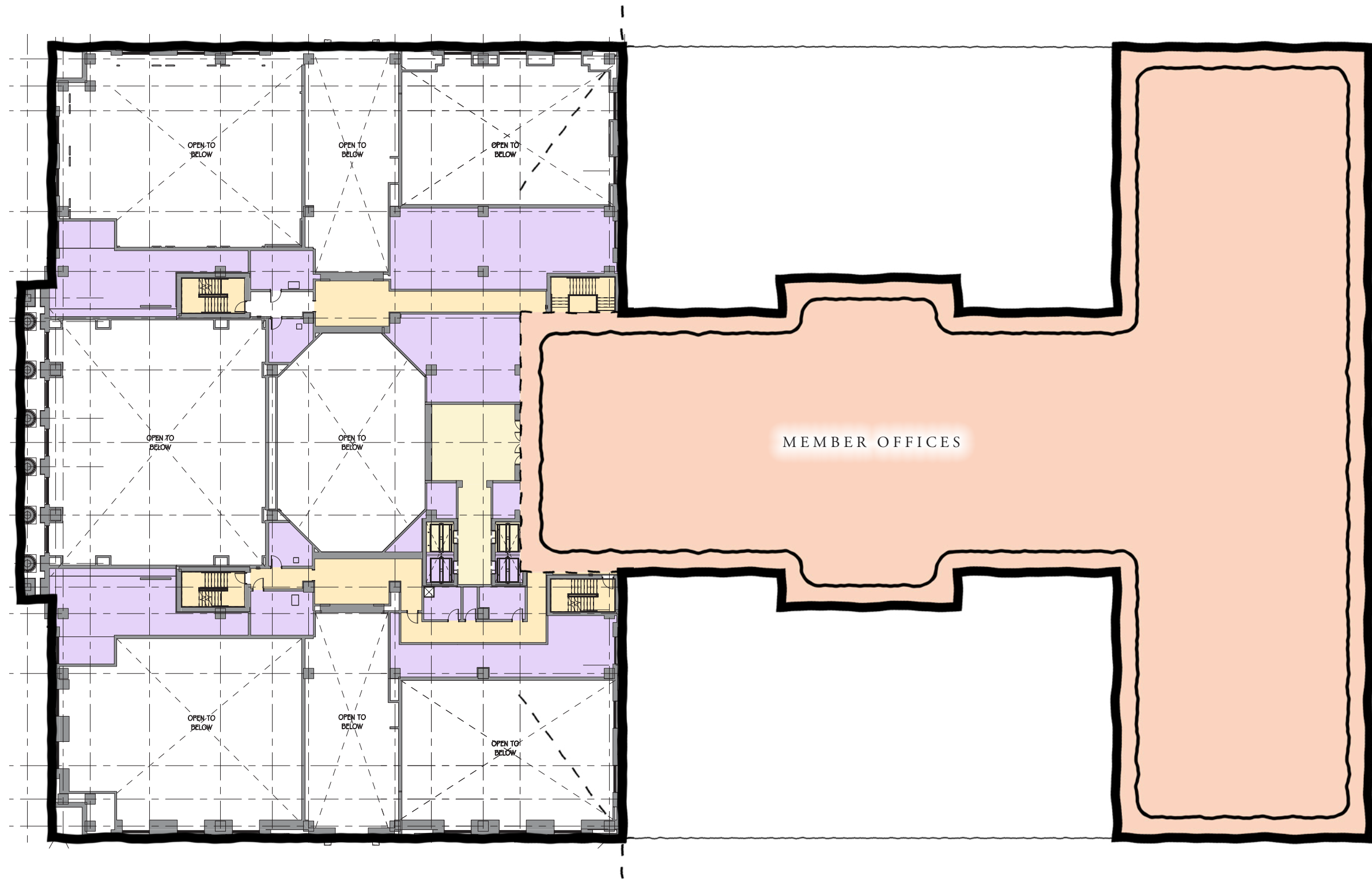
SCALE: 1/32" = 1'-0"  
0 8 16 32

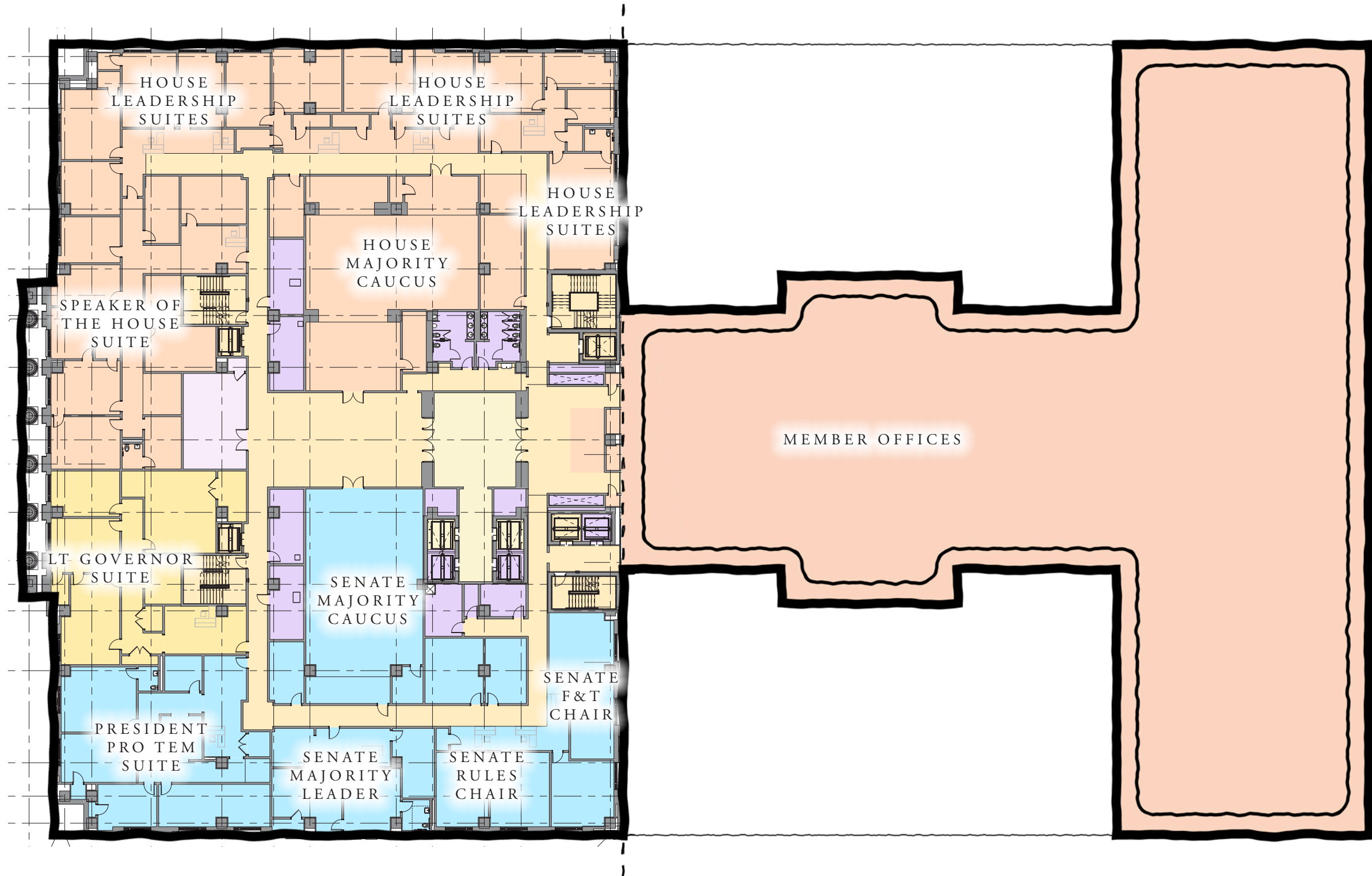




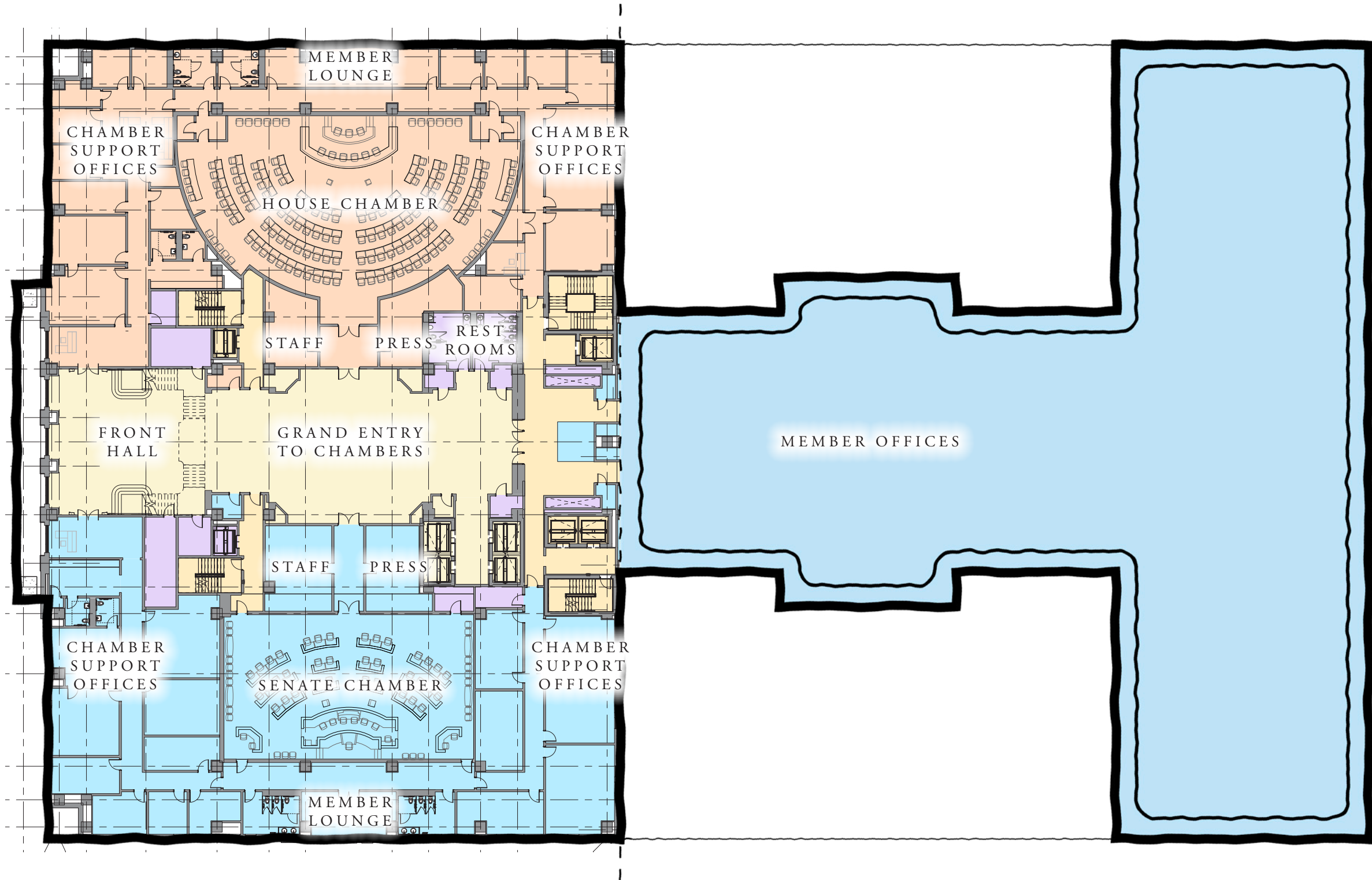


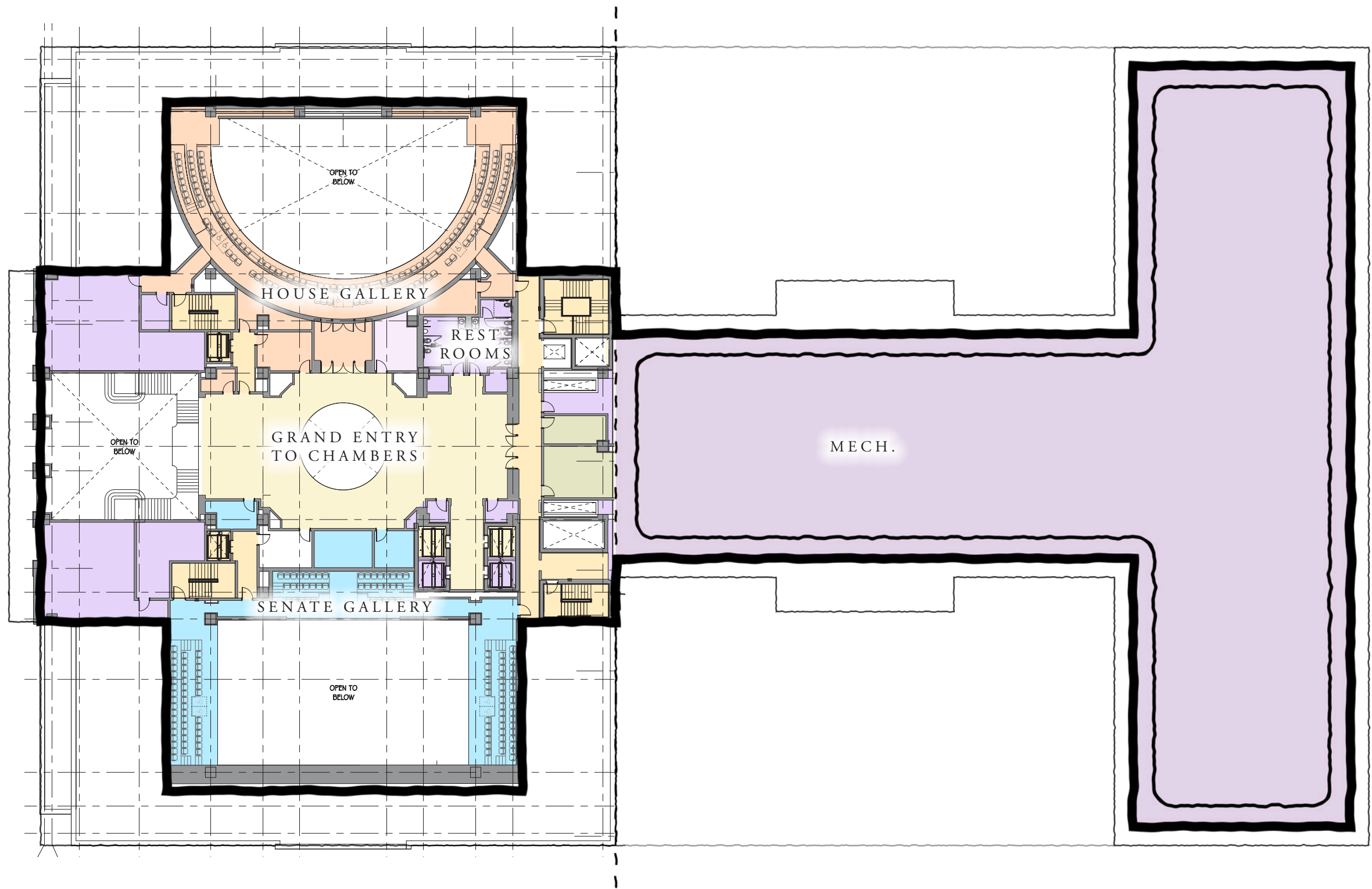


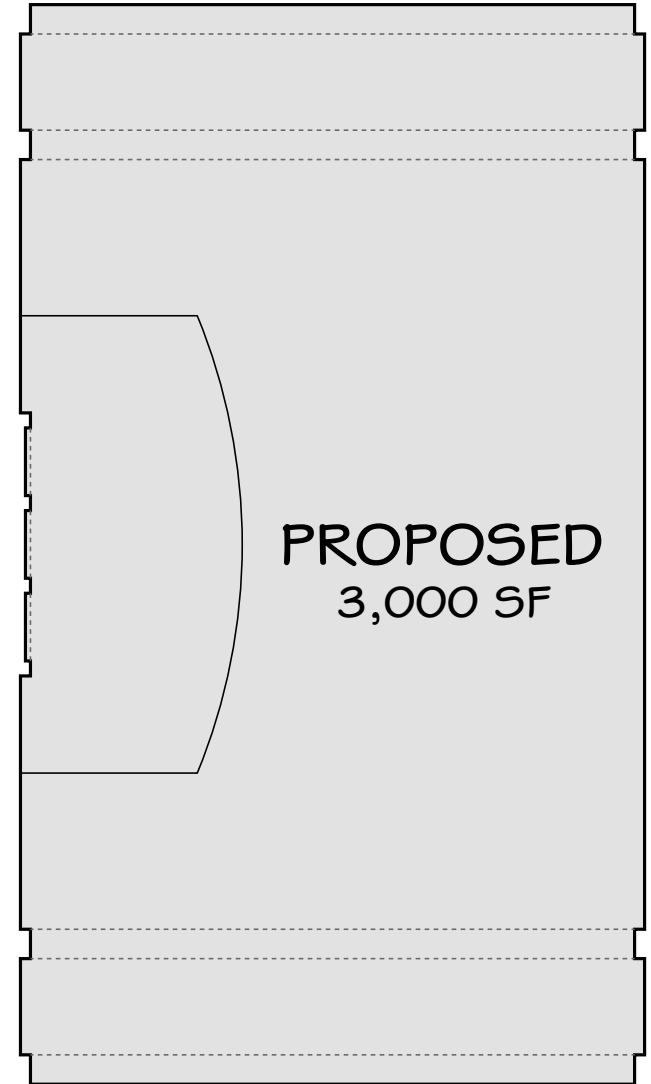
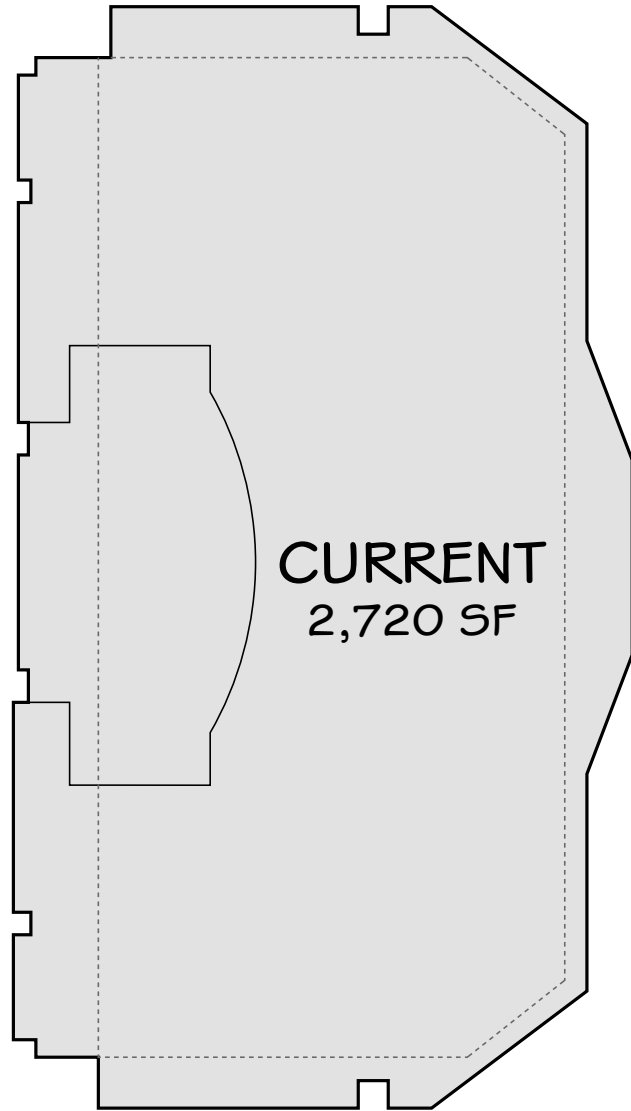
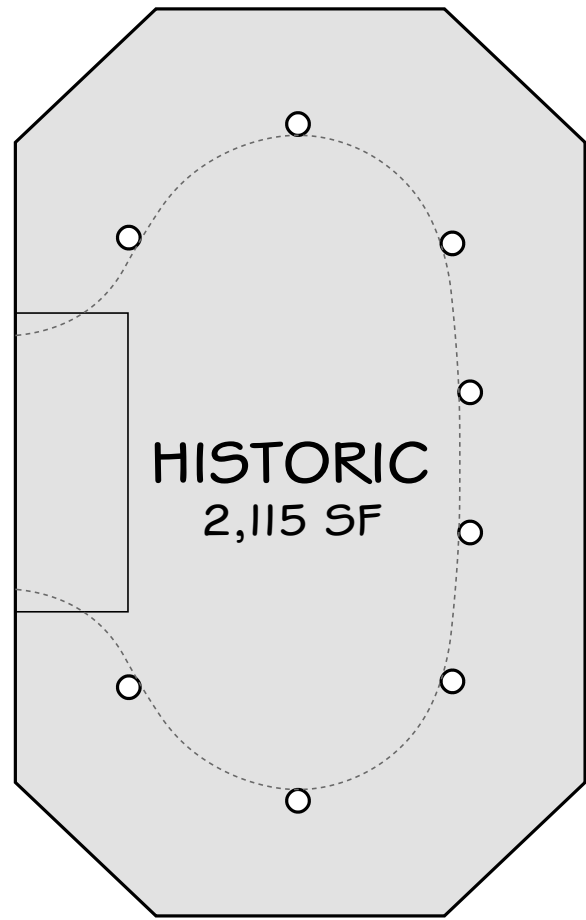












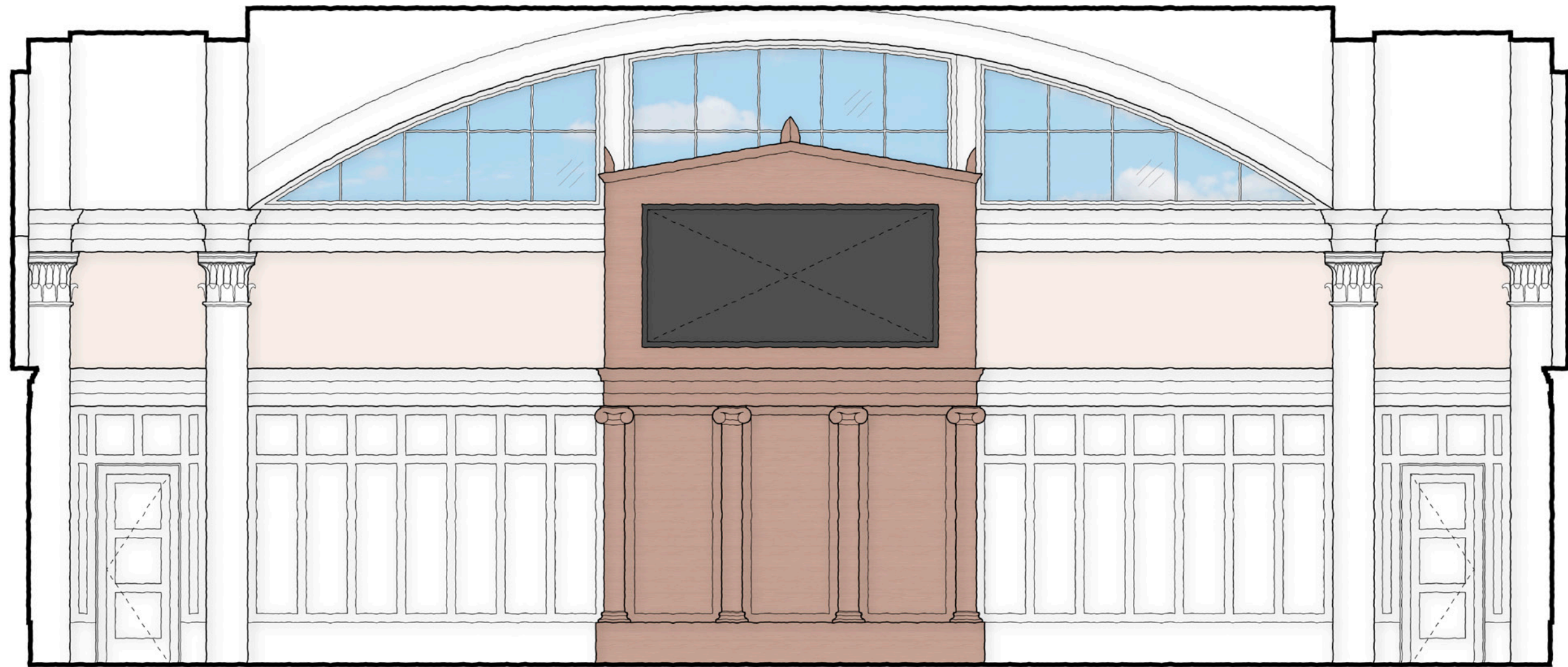


10% MORE FLOOR AREA

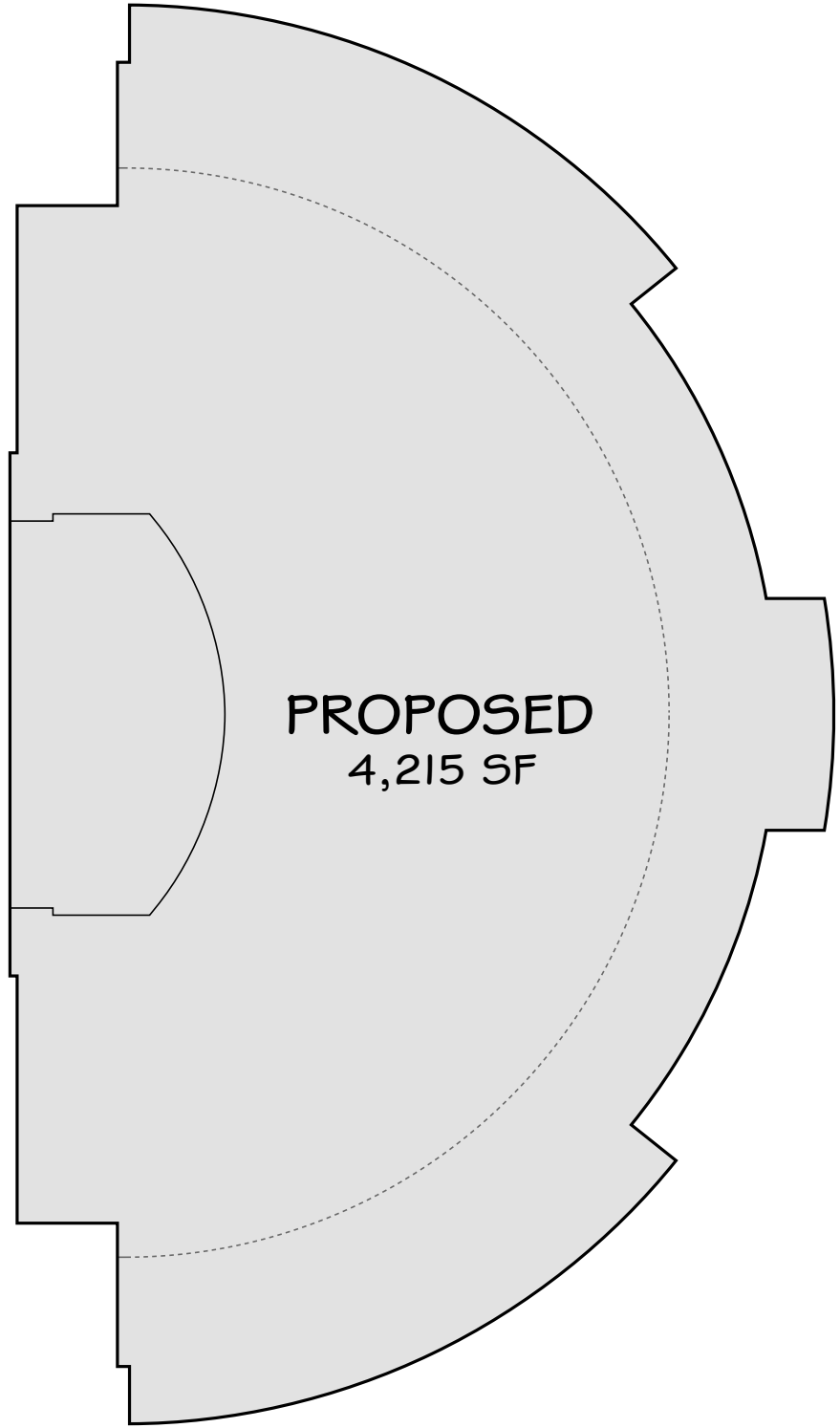
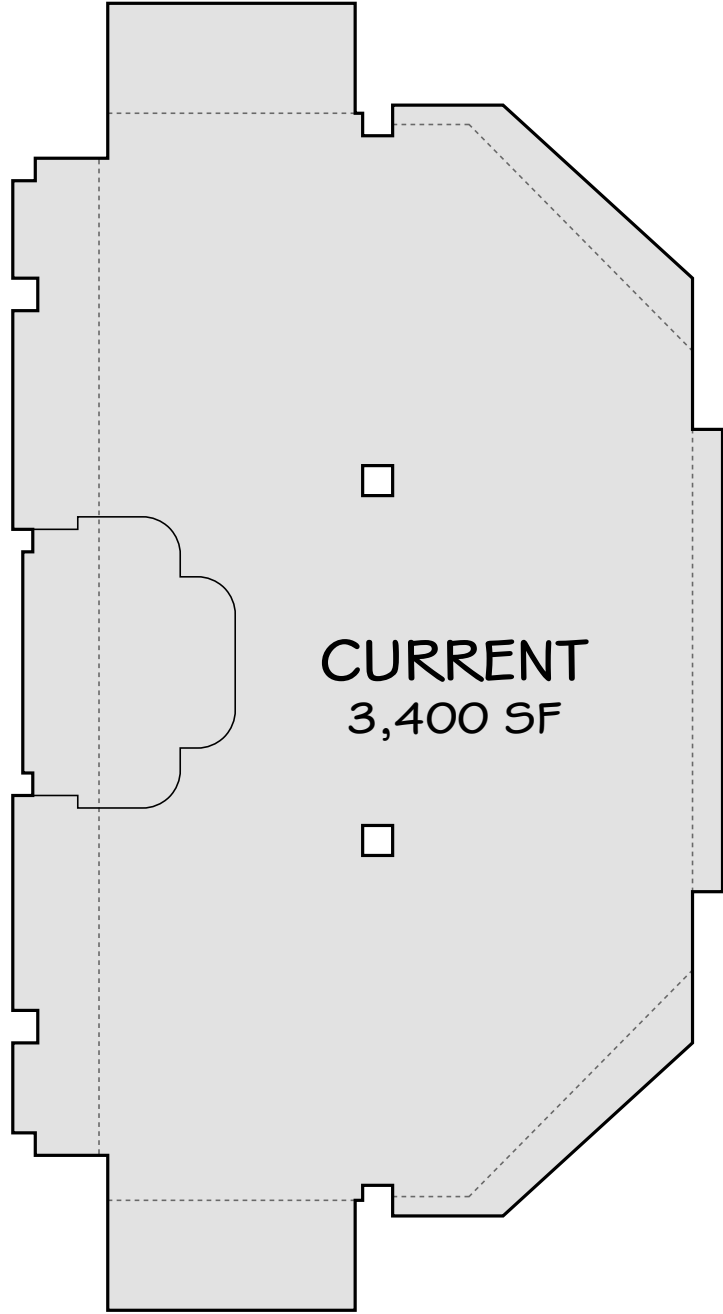
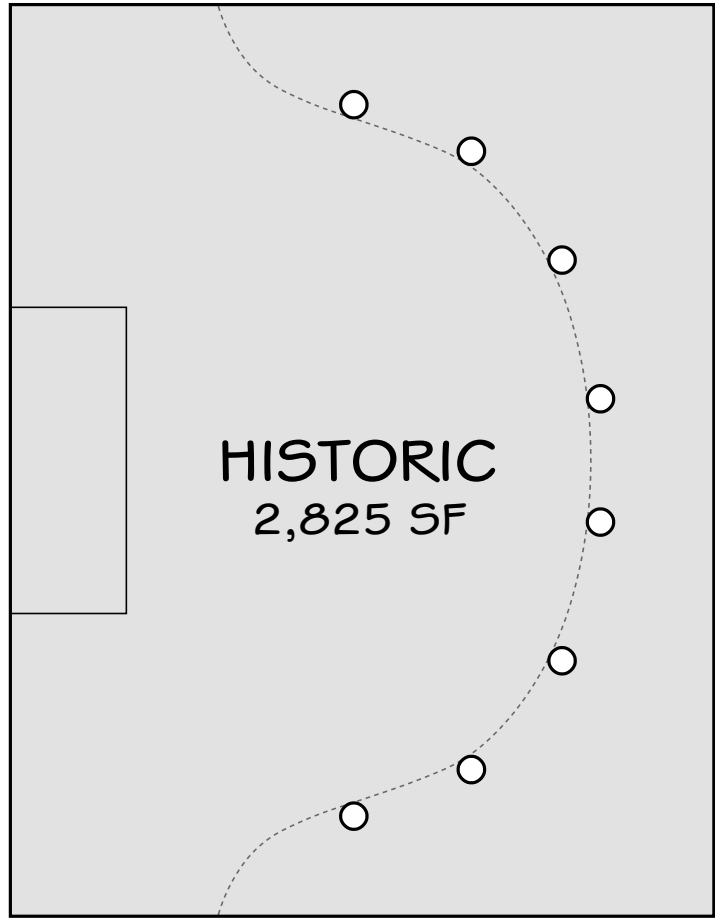
### TYPICAL AISLE WIDTHS

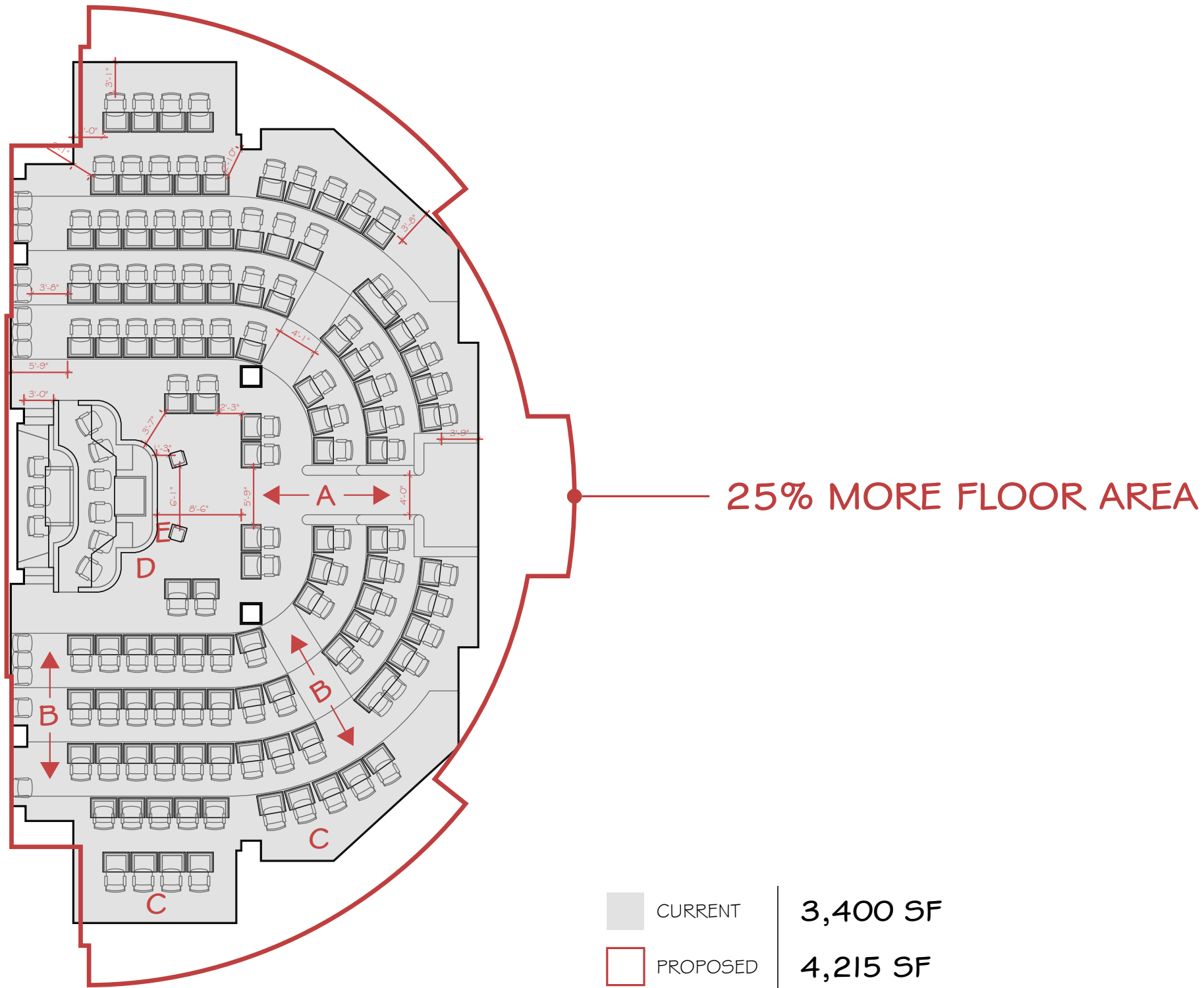
CURRENT		PROPOSED
5'-0"	MIN. ENTRY <b>A</b>	6'-0"
2'-2"	MIN. SIDE <b>B</b>	3'-0"
2'-1"	MIN. REAR <b>C</b>	4'-3"
4'-0"	MIN. DAIS <b>D</b>	7'-6"
1'-3"	MIN. PODIUM <b>E</b>	2'-10"

<span style="display:inline-block; width:15px; height:15px; background-color:grey;"></span> CURRENT	2,720 SF
<span style="display:inline-block; width:15px; height:15px; border:1px solid red;"></span> PROPOSED	3,000 SF



SENATE CHAMBER

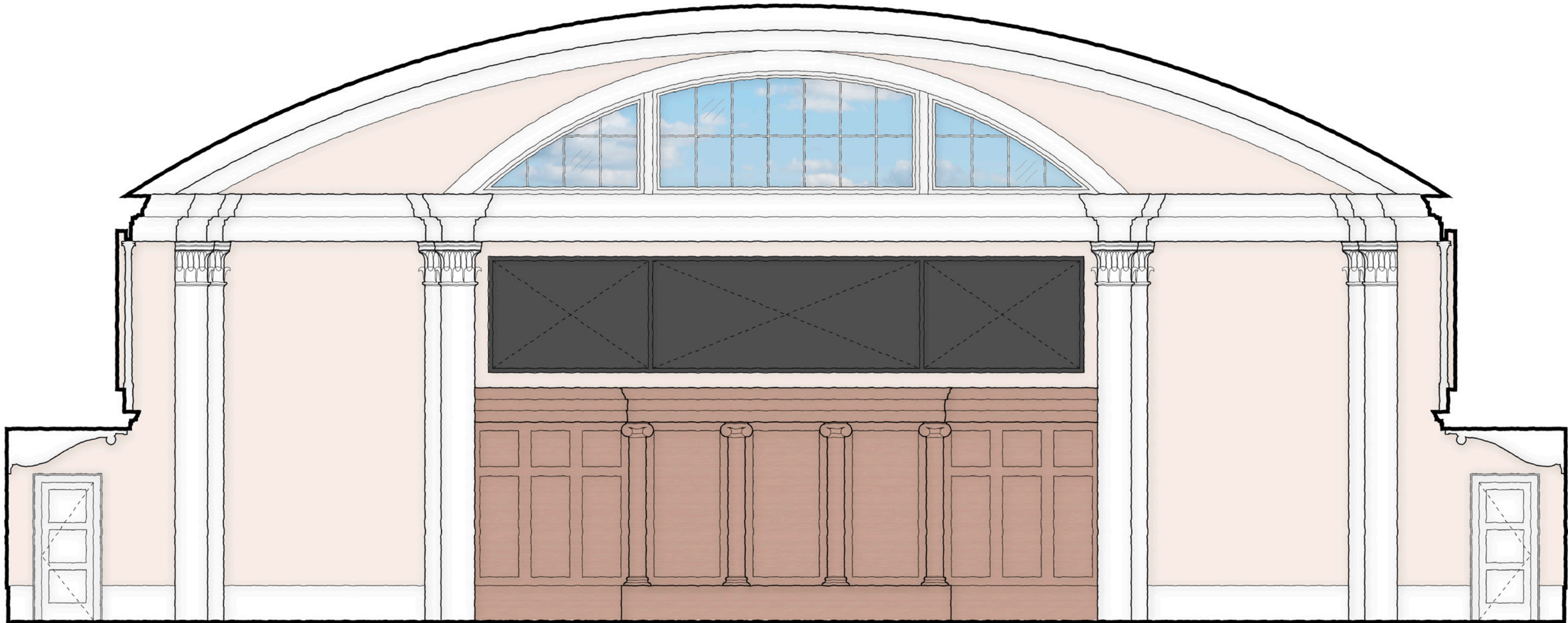




### TYPICAL AISLE WIDTHS

CURRENT		PROPOSED
4'-0"	MIN. ENTRY <b>A</b>	4'-0"
3'-8"	MIN. SIDE <b>B</b>	3'-6"
2'-1"	MIN. REAR <b>C</b>	4'-6"
3'-7"	MIN. DAIS <b>D</b>	5'-0"
1'-3"	MIN. PODIUM <b>E</b>	3'-8"

EXISTING HOUSE CHAMBER



01 MAY 2024

**HOUSE CHAMBER**

ALABAMA STATE HOUSE • MONTGOMERY, AL  
GOODWYN MILLS CAWOOD | ROBERT A.M. STERN ARCHITECTS